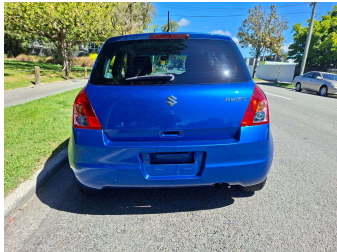
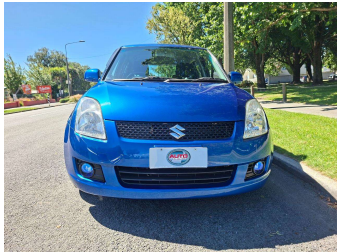
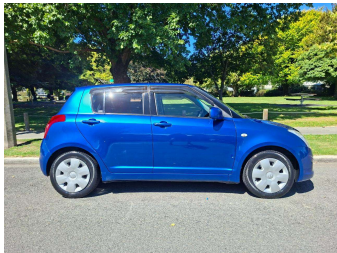
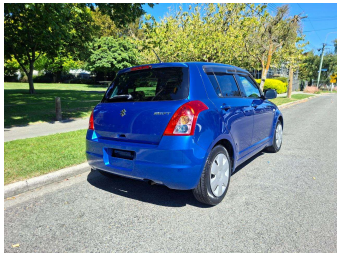


2009 Suzuki Swift 1.3XG



Purchase Price

\$6,590

Includes GST
Excludes on-road costs of \$400

Finance may be available on this vehicle. Ask one of our friendly staff for more information.

Gain peace of mind with Mechanical Breakdown Insurance. **Ask us how.**

Top features

- » AA Odometer Certified
- » Air Bag(s)
- » Air Conditioning
- » CD Player
- » Central Locking
- » Chain-driven Engine
- » Digital Display
- » Electric Mirrors
- » Electric Windows
- » Immobiliser
- » Power Steering
- » Push Button Start
- » Remote Locking
- » Smart Key
- » Tinted Windows

Body Style

5 door, Hatchback

Odometer

136,425 km

Engine

1300 cc, Internal Combustion

Fuel Type

Petrol

Transmission

Auto, 2WD

Wheels

-

VIN

7AT0GK0CX14561034

Interior

Black

Safety



Based on 2025 UCSR rating for 05-10 models

Reg No.

HZF620

Ext Colour

Blue

History

Ex-Overseas, 4 owners

Seats

5 seats

CO2 Emissions

★★★★☆

147 grams/km

Energy Economy

★★★★☆☆

**Annual fuel cost of \$2,390
6.1L per 100km**

Cost per year is an estimate based on petrol price of \$2.80 per litre and an average distance of 14000 km. Emissions and Energy Economy figures standardised to 3P WLTP.

Stock ID: 6340



Auto Depot | Phone 0800 001 198 | Email sales@autodepot.co.nz
432 - 434 St Asaph Street, Phillipstown, Christchurch 8011, New Zealand
www.autodepot.co.nz



★★★★★
4.78 | 684 reviews