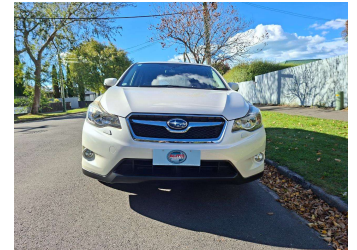
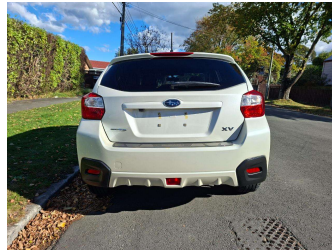


# 2013 Subaru XV 4WD 2.0I-L EYESIGHT



**Purchase Price** **\$11,990**

Includes GST  
Excludes on-road costs of \$400

Finance may be available on this vehicle. Ask one of our friendly staff for more information.

Gain peace of mind with Mechanical Breakdown Insurance. **Ask us how.**

- Top features**
- » AA Odometer Certified
  - » Air Bag(s)
  - » Air Conditioning
  - » Central Locking
  - » Digital Display
  - » Electric Mirrors
  - » Electric Windows
  - » Power Steering
  - » Remote Locking
  - » VINZ Certified

Body Style  
**5 door, Hatchback**

Odometer  
**96,800 km**

Engine  
**2000 cc, Internal Combustion**

Fuel Type  
**Petrol**

Transmission  
**Auto, 4WD**

Wheels  
-

VIN  
**7AT0GF09X26030229**

Interior  
**Black**

Safety



Based on 2025 UCSR rating for 12-16 models

Reg No.  
-

Ext Colour  
**PEARL**

History  
**Ex-Overseas**

Seats  
**5 seats**

CO2 Emissions  
**★★★★☆**  
**167 grams/km**

Energy Economy  
**★★★☆☆**  
**Annual fuel cost of \$2,780**  
**7.1L per 100km**

Cost per year is an estimate based on petrol price of \$2.80 per litre and an average distance of 14000 km. Emissions and Energy Economy figures standardised to 3P WLTP.

**Stock ID: 6344**



Auto Depot | Phone 0800 001 198 | Email sales@autodepot.co.nz  
432 - 434 St Asaph Street, Phillipstown, Christchurch 8011, New Zealand  
www.autodepot.co.nz

**4.78** | 703 reviews