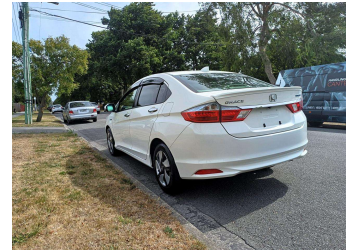
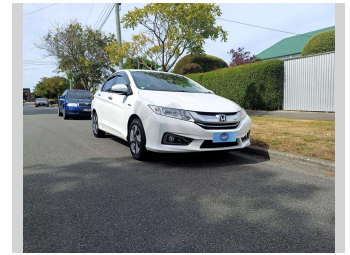
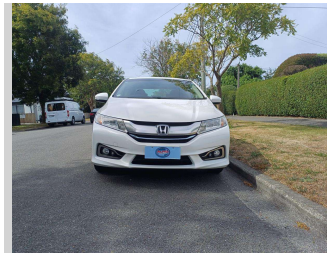


2015 Honda Grace HYBRID LX



Purchase Price **\$14,990**

Includes GST
Excludes on-road costs of \$400

Finance may be available on this vehicle. Ask one of our friendly staff for more information.

Gain peace of mind with Mechanical Breakdown Insurance. **Ask us how.**

- Top features**
- » AA Odometer Certified
 - » Air Bag(s)
 - » Air Conditioning
 - » All Electrics
 - » Auto headlights
 - » CD Player
 - » Central Locking
 - » Chain-driven Engine
 - » Climate Control
 - » Cruise Control
 - » Digital Display
 - » Electric Mirrors
 - » Electric Windows
 - » Fog Lights
 - » HID Headlights
 - » Immobiliser
 - » Indicator Mirrors
 - » Multi-function Steerin...

Body Style
4 door, Sedan

Odometer
40,000 km

Engine
1500 cc, Internal Combustion

Fuel Type
Hybrid

Transmission
Auto, 2WD

Wheels
-

VIN
7AT08GEDX24022460

Interior
Black, Cloth

Safety



Based on 2023 VSRR rating

Reg No.
-

Ext Colour
Pearl White

History
Ex-Overseas

Seats
5 seats

CO2 Emissions
★★★★☆
90 grams/km

Energy Economy
★★★★☆

Annual fuel cost of \$1,490
3.8L per 100km

Cost per year is an estimate based on petrol price of \$2.80 per litre and an average distance of 14000 km. Emissions and Energy Economy figures standardised to 3P WLTP.

Stock ID: 5833



Auto Depot | Phone 0800 001 198 | Email sales@autodepot.co.nz
432 - 434 St Asaph Street, Phillipstown, Christchurch 8011, New Zealand
www.autodepot.co.nz

★★★★★
4.76 | 508 reviews