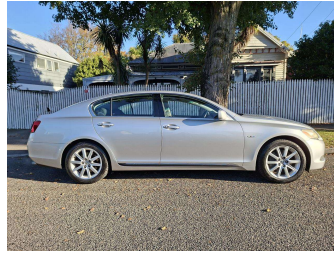


2006 Lexus GS350 V6



Purchase Price **\$7,990**

Includes GST
Excludes on-road costs of \$400

Finance may be available on this vehicle. Ask one of our friendly staff for more information.

Gain peace of mind with Mechanical Breakdown Insurance. **Ask us how.**

- Top features**
- » 18' Factory Alloys
 - » 9 Air Bags
 - » Adaptive Front Light S...
 - » Auto headlights
 - » Auto rain wipers
 - » Chain-driven Engine
 - » Climate Control
 - » Cruise Control
 - » Electric Adjustable Lu...
 - » Electric Adjustable St...
 - » Electric Seats
 - » HID Headlights
 - » Immobiliser
 - » ISOFIX for childseat
 - » Push Button Start
 - » Reverse Camera
 - » Side and Curtain Airba...
 - » Smart Key

Body Style
4 door, Sedan

Odometer
188,210 km

Engine
3500 cc, Internal Combustion

Fuel Type
Petrol

Transmission
Auto, Rear Wheel

Wheels
-

VIN
7AT0B00RX20005977

Interior
Black

Safety



Based on 2025 VSRR rating

Reg No.
NDE336

Ext Colour
Silver

History
Ex-Overseas, 3 owners

Seats
5 seats

CO2 Emissions
★☆☆☆☆
264 grams/km

Energy Economy
★☆☆☆☆

**Annual fuel cost of \$4,310
11L per 100km**

Cost per year is an estimate based on petrol price of \$2.80 per litre and an average distance of 14000 km. Emissions and Energy Economy figures standardised to 3P WLTP.

Stock ID: 6379



Auto Depot | Phone 0800 001 198 | Email sales@autodepot.co.nz
432 - 434 St Asaph Street, Phillipstown, Christchurch 8011, New Zealand
www.autodepot.co.nz

4.78 | 706 reviews