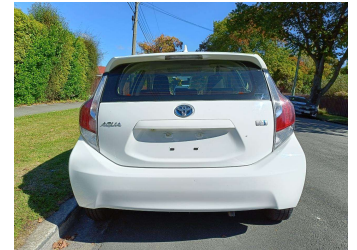
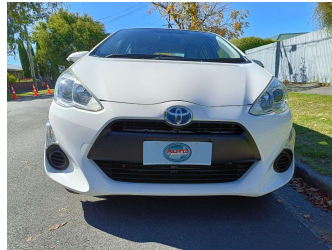
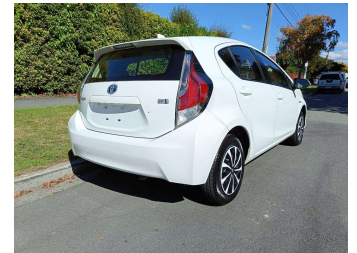


# 2016 Toyota Aqua Push Button Start



**Purchase Price** **\$12,990**

Includes GST  
Excludes on-road costs of \$400

Finance may be available on this vehicle. Ask one of our friendly staff for more information.

Gain peace of mind with Mechanical Breakdown Insurance. **Ask us how.**

- Top features**
- » AA Odometer Certified
  - » Air Bag(s)
  - » Air Conditioning
  - » AUX-IN
  - » Bluetooth Handfree
  - » CD Player
  - » Chain-driven Engine
  - » Electric Mirrors
  - » HID Headlights
  - » Immobiliser
  - » ISOFIX for childseat
  - » Push Button Start
  - » Remote Locking
  - » Smart Key
  - » Spoiler
  - » USB Connectivity

Body Style  
**5 door, Hatchback**

Odometer  
**54,638 km**

Engine  
**1500 cc, Hybrid**

Fuel Type  
**Hybrid**

Transmission  
**Auto, 2WD**

Wheels  
-

VIN  
**7AT0H65YX20479218**

Interior  
**Grey**

Safety



Based on 2024 UCSR rating for 12-20 models

Reg No.  
**MWL716**

Ext Colour  
**White**

History  
**Ex-Overseas, 1 owner**

Seats  
**5 seats**

CO2 Emissions  
**★★★★☆**  
**86 grams/km**

Energy Economy  
**★★★★☆**  
**Annual fuel cost of \$1,410**  
**3.6L per 100km**

Cost per year is an estimate based on petrol price of \$2.80 per litre and an average distance of 14000 km. Emissions and Energy Economy figures standardised to 3P WLTP.

**Stock ID: 6104**



Auto Depot | Phone 0800 001 198 | Email sales@autodepot.co.nz  
432 - 434 St Asaph Street, Phillipstown, Christchurch 8011, New Zealand  
www.autodepot.co.nz

**4.77** | 603 reviews