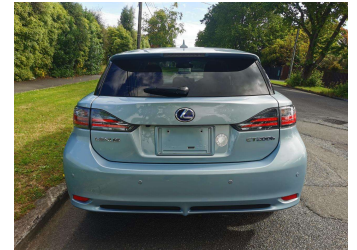
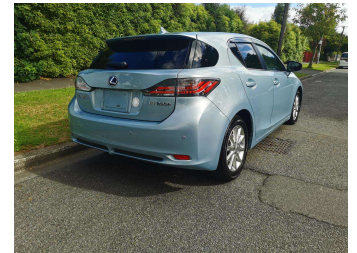


2011 Lexus CT 200H 1.8L HYBRID



Purchase Price

\$15,990

Includes GST
Excludes on-road costs of \$400

Finance may be available on this vehicle. Ask one of our friendly staff for more information.

Gain peace of mind with Mechanical Breakdown Insurance. **Ask us how.**

Top features

- » 10 Air Bags
- » AA Odometer Certified
- » Air Conditioning
- » All Electrics
- » Alloy Wheels
- » Auto headlights
- » Auto rain wipers
- » Auto Start Stop System
- » AUX-IN
- » Bluetooth Handfree
- » Cargo Blind
- » CD Player
- » Central Locking
- » Chain-driven Engine
- » Climate Control
- » Cruise Control
- » Digital Display
- » Electric Mirrors

Body Style

5 door, Hatchback

Odometer

40,737 km

Engine

1800 cc, Internal Combustion

Fuel Type

Hybrid

Transmission

Auto, 2WD

Wheels

-

VIN

7AT0B010X22065945

Interior

Black, Cloth

Safety



Based on 2023 VSRR rating

Reg No.

QBK472

Ext Colour

Light Blue

History

Ex-Overseas

Seats

5 seats

CO2 Emissions

★★★★☆

109 grams/km

Energy Economy

★★★★☆☆

Annual fuel cost of \$1,840

4.7L per 100km

Cost per year is an estimate based on petrol price of \$2.80 per litre and an average distance of 14000 km. Emissions and Energy Economy figures standardised to 3P WLTP.

Stock ID: 5426



Auto Depot | Phone 0800 001 198 | Email sales@autodepot.co.nz
432 - 434 St Asaph Street, Phillipstown, Christchurch 8011, New Zealand
www.autodepot.co.nz



★★★★★
4.76 | 512 reviews