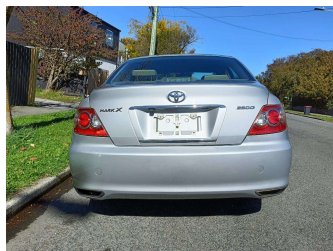
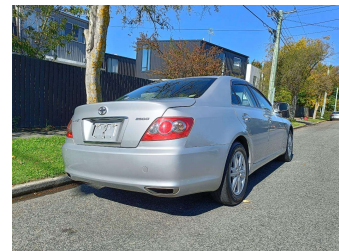


# 2008 Toyota Mark-X 250G



Purchase Price

**\$5,990**

Includes GST  
Excludes on-road costs of \$400

Finance may be available on this vehicle. Ask one of our friendly staff for more information.

Gain peace of mind with Mechanical Breakdown Insurance. **Ask us how.**

## Top features

- » Air Bag(s)
- » Air Conditioning
- » All Electrics
- » Auto headlights
- » Central Locking
- » Chain-driven Engine
- » Climate Control
- » Electric Adjustable Lu...
- » Electric Mirrors
- » Electric Seats
- » Electric Windows
- » Fog Lights
- » HID Headlights
- » Power Steering
- » Remote Locking
- » V6 Power

Body Style

**4 door, Sedan**

Odometer

**172,050 km**

Engine

**2500 cc, Internal Combustion**

Fuel Type

**Petrol**

Transmission

**Auto, 2WD**

Wheels

-

VIN

**7AT0H64TX17051937**

Interior

**Beige**

Safety



Based on 2024 VSRR rating

Reg No.

**MME424**

Ext Colour

**Silver**

History

**Ex-Overseas, 2 owners**

Seats

**5 seats**

CO2 Emissions

★ ★ ★ ☆ ☆ ☆

**217 grams/km**

Energy Economy

★ ☆ ☆ ☆ ☆ ☆

**Annual fuel cost of \$3,530  
9L per 100km**

Cost per year is an estimate based on petrol price of \$2.80 per litre and an average distance of 14000 km. Emissions and Energy Economy figures standardised to 3P WLTP.

**Stock ID: 6118**



Auto Depot | Phone 0800 001 198 | Email sales@autodepot.co.nz  
432 - 434 St Asaph Street, Phillipstown, Christchurch 8011, New Zealand  
www.autodepot.co.nz



4.78 | 606 reviews