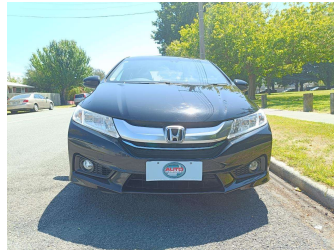


2016 Honda Grace Leather Hybrid



Purchase Price **\$13,990**

Includes GST
Excludes on-road costs of \$400

Finance may be available on this vehicle. Ask one of our friendly staff for more information.

Gain peace of mind with Mechanical Breakdown Insurance. **Ask us how.**

- Top features**
- » 8 Air Bags
 - » AA Odometer Certified
 - » Air Conditioning
 - » Auto headlights
 - » Auto rain wipers
 - » Bluetooth Handfree
 - » Chain-driven Engine
 - » Climate Control
 - » Cruise Control
 - » Electric Windows
 - » Forward Collision Miti...
 - » Heated Electric Mirror...
 - » Heated Seats
 - » Immobiliser
 - » ISOFIX for childseat
 - » Paddel Shift
 - » Remote Locking
 - » Reverse Camera

Body Style
5 door, Sedan

Odometer
82,545 km

Engine
1500 cc, Hybrid

Fuel Type
Hybrid

Transmission
Auto, 2WD

Wheels
-

VIN
7AT08GEDX23017755

Interior
Black

Safety



Based on 2024 VSRR rating

Reg No.
QCW28

Ext Colour
Black

History
Ex-Overseas, 1 owner

Seats
5 seats

CO2 Emissions
★★★★☆
96 grams/km

Energy Economy
★★★★☆

Annual fuel cost of \$1,610
4.1L per 100km

Cost per year is an estimate based on petrol price of \$2.80 per litre and an average distance of 14000 km. Emissions and Energy Economy figures standardised to 3P WLTP.

Stock ID: 6030



Auto Depot | Phone 0800 001 198 | Email sales@autodepot.co.nz
432 - 434 St Asaph Street, Phillipstown, Christchurch 8011, New Zealand
www.autodepot.co.nz



4.77 | 580 reviews