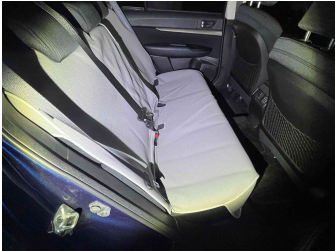
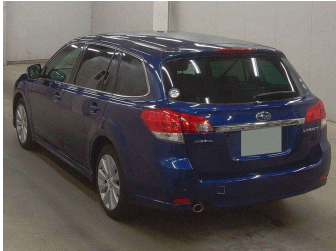


2011 Subaru Legacy 2.5I S PACKAGE 4WD



Purchase Price

\$11,990

Includes GST
Excludes on-road costs of \$400

Finance may be available on this vehicle. Ask one of our friendly staff for more information.

Gain peace of mind with Mechanical Breakdown Insurance. **Ask us how.**

Top features

- » AA Odometer Certified
- » Adaptive Radar Cruise...
- » Air Bag(s)
- » Air Conditioning
- » All Electrics
- » Alloy Wheels
- » CD Player
- » Central Locking
- » Climate Control
- » Digital Display
- » Downhill Assist Contro...
- » Electric Mirrors
- » Electric Seats
- » Electric Windows
- » Fog Lights
- » Forward Collision Miti...
- » HID Headlights
- » Immobiliser

Body Style

Station Wagon

Odometer

49,900 km

Engine

2500 cc, Internal Combustion

Fuel Type

Petrol

Transmission

Auto

Wheels

-

VIN

7AT0GF0BX24058168

Interior

Black, Cloth

Safety



Based on 2023 UCSR rating for 09-14 models

Reg No.

-

Ext Colour

Blue

History

Ex-Overseas

Seats

5 seats

CO2 Emissions

★★★★☆☆

210 grams/km

Energy Economy

★★☆☆☆☆

**Annual fuel cost of \$3,450
8.8L per 100km**

Cost per year is an estimate based on petrol price of \$2.80 per litre and an average distance of 14000 km. Emissions and Energy Economy figures standardised to 3P WLTP.

Stock ID: 5879



Auto Depot | Phone 0800 001 198 | Email sales@autodepot.co.nz
432 - 434 St Asaph Street, Phillipstown, Christchurch 8011, New Zealand
www.autodepot.co.nz



★★★★★★
4.76 | 517 reviews