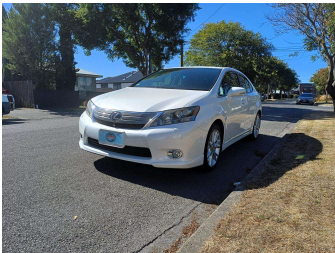
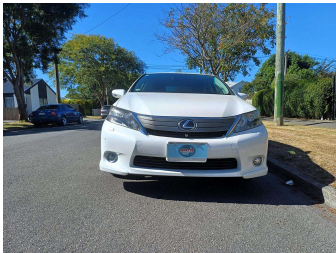


# 2012 Lexus HS250H Sports Hybrid



Purchase Price

**\$12,990**

Includes GST  
Excludes on-road costs of \$400

Finance may be available on this vehicle. Ask one of our friendly staff for more information.

Gain peace of mind with Mechanical Breakdown Insurance. **Ask us how.**

## Top features

- » 18' Factory Alloys
- » 9 Air Bags
- » AA Odometer Certified
- » Air Conditioning
- » All Electrics
- » Alloy Wheels
- » Auto headlights
- » AUX-IN
- » Bluetooth Handfree
- » CD Player
- » Central Locking
- » Chain-driven Engine
- » Climate Control
- » Cruise Control
- » Digital Display
- » Electric Adjustable Lu...
- » Electric Mirrors
- » Electric Seats

Body Style

**4 door, Sedan**

Odometer

**73,463 km**

Engine

**2400 cc, Internal Combustion**

Fuel Type

**Hybrid**

Transmission

**Auto, 2WD**

Wheels

-

VIN

**7AT0B01CX24054412**

Interior

**Black, Cloth**

Safety



Based on 2023 VSRR rating

Reg No.

-

Ext Colour

**Pearl White**

History

**Ex-Overseas**

Seats

**5 seats**

CO2 Emissions

★★★★★☆☆

**134 grams/km**

Energy Economy

★★★★☆☆☆☆

**Annual fuel cost of \$2,270**

**5.8L per 100km**

Cost per year is an estimate based on petrol price of \$2.80 per litre and an average distance of 14000 km. Emissions and Energy Economy figures standardised to 3P WLTP.

**Stock ID: 5821**



Auto Depot | Phone 0800 001 198 | Email [sales@autodepot.co.nz](mailto:sales@autodepot.co.nz)  
432 - 434 St Asaph Street, Phillipstown, Christchurch 8011, New Zealand  
[www.autodepot.co.nz](http://www.autodepot.co.nz)



★★★★★  
4.76 | 517 reviews