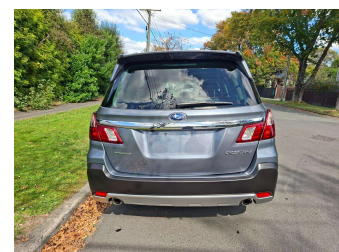
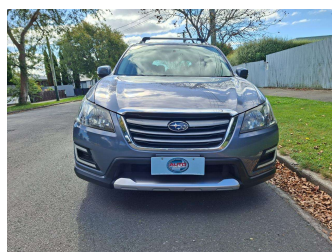
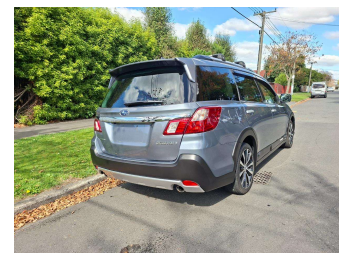


2015 Subaru Exiga CROSSOVER7 4WD



Purchase Price **\$15,590**

Includes GST
Excludes on-road costs of \$400

Finance may be available on this vehicle. Ask one of our friendly staff for more information.

Gain peace of mind with Mechanical Breakdown Insurance. **Ask us how.**

- Top features**
- » 8 Air Bags
 - » AA Odometer Certified
 - » Adaptive Radar Cruise...
 - » Air Conditioning
 - » All Wheel Drive
 - » Auto headlights
 - » Bluetooth Handfree
 - » Climate Control
 - » DVD Player
 - » Electric Adjustable Lu...
 - » Electric Mirrors
 - » Electric Seats
 - » Forward Collision Miti...
 - » Half Leather Seats
 - » Heated Seats
 - » Immobiliser
 - » ISOFIX for childseat
 - » LDW (Lane Departure Wa...

Body Style
5 door, Station Wagon

Odometer
80,686 km

Engine
2500 cc, Internal Combustion

Fuel Type
Petrol

Transmission
Auto, 4WD

Wheels
-

VIN
7AT0GF1RX26019217

Interior
Black

Safety



Based on 2025 UCSR rating for 09-14 models

Reg No.
-

Ext Colour
Grey

History
Ex-Overseas

Seats
7 seats

CO2 Emissions
★★★★☆
195 grams/km

Energy Economy
★★★★☆☆

**Annual fuel cost of \$3,290
8.4L per 100km**

Cost per year is an estimate based on petrol price of \$2.80 per litre and an average distance of 14000 km. Emissions and Energy Economy figures standardised to 3P WLTP.

Stock ID: 6327



Auto Depot | Phone 0800 001 198 | Email sales@autodepot.co.nz
432 - 434 St Asaph Street, Phillipstown, Christchurch 8011, New Zealand
www.autodepot.co.nz

4.78 | 699 reviews