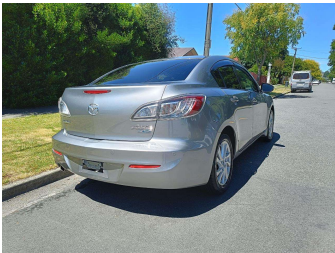
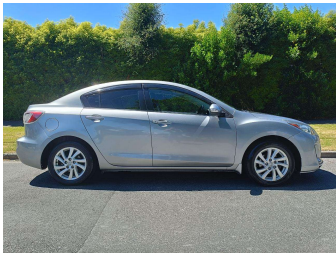


2011 Mazda Axela 20S Sports



Purchase Price

\$9,990

Includes GST
Excludes on-road costs of \$400

Finance may be available on this vehicle. Ask one of our friendly staff for more information.

Gain peace of mind with Mechanical Breakdown Insurance. **Ask us how.**

Top features

- » 6 Air Bags
- » AA Odometer Certified
- » Adaptive Front Light S...
- » Air Conditioning
- » Alloy Wheels
- » Auto headlights
- » Auto rain wipers
- » Bluetooth Handfree
- » CD Player
- » Central Locking
- » Chain-driven Engine
- » Climate Control
- » Digital Display
- » Electric Mirrors
- » Electric Windows
- » Fog Lights
- » HID Headlights
- » Immobiliser

Body Style

4 door, Sedan

Odometer

92,675 km

Engine

2000 cc, Internal Combustion

Fuel Type

Petrol

Transmission

Auto, 2WD

Wheels

-

VIN

7AT0C13JX18100631

Interior

Black

Safety



Based on 2025 UCSR rating for 09-13 models

Reg No.

LLE579

Ext Colour

Silver

History

Ex-Overseas, 3 owners

Seats

5 seats

CO2 Emissions

★★★★☆

166 grams/km

Energy Economy

★★★☆☆

Annual fuel cost of \$2,700

6.9L per 100km

Cost per year is an estimate based on petrol price of \$2.80 per litre and an average distance of 14000 km. Emissions and Energy Economy figures standardised to 3P WLTP.

Stock ID: 6284



Auto Depot | Phone 0800 001 198 | Email sales@autodepot.co.nz
432 - 434 St Asaph Street, Phillipstown, Christchurch 8011, New Zealand
www.autodepot.co.nz



★★★★★
4.78 | 677 reviews