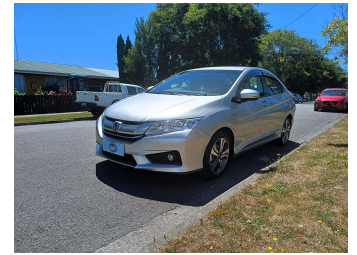
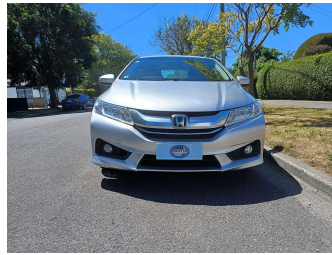


# 2015 Honda Grace Leather Hybrid



**Purchase Price** **\$15,990**

Includes GST  
Excludes on-road costs of \$400

Finance may be available on this vehicle. Ask one of our friendly staff for more information.

Gain peace of mind with Mechanical Breakdown Insurance. **Ask us how.**

- Top features**
- » 8 Air Bags
  - » AA Odometer Certified
  - » Air Conditioning
  - » All Electrics
  - » Alloy Wheels
  - » Auto headlights
  - » Auto rain wipers
  - » CD Player
  - » Central Locking
  - » Chain-driven Engine
  - » Climate Control
  - » Cruise Control
  - » Digital Display
  - » Electric Mirrors
  - » Electric Windows
  - » Fog Lights
  - » Half Leather Seats
  - » Heater Seats

Body Style  
**5 door, Sedan**

Odometer  
**35,520 km**

Engine  
**1500 cc, Internal Combustion**

Fuel Type  
**Hybrid**

Transmission  
**Auto, 2WD**

Wheels  
-

VIN  
**7AT08GEDX24009163**

Interior  
**Black, Half Leather**

Safety



Based on 2023 VSRR rating

Reg No.  
-

Ext Colour  
**Silver**

History  
**Ex-Overseas**

Seats  
**5 seats**

CO2 Emissions  
**★★★★☆**  
**96 grams/km**

Energy Economy  
**★★★★☆☆**

**Annual fuel cost of \$1,610**  
**4.1L per 100km**

Cost per year is an estimate based on petrol price of \$2.80 per litre and an average distance of 14000 km. Emissions and Energy Economy figures standardised to 3P WLTP.

**Stock ID: 5784**



Auto Depot | Phone 0800 001 198 | Email sales@autodepot.co.nz  
432 - 434 St Asaph Street, Phillipstown, Christchurch 8011, New Zealand  
www.autodepot.co.nz

**4.76** | 508 reviews