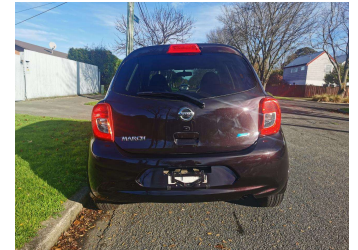
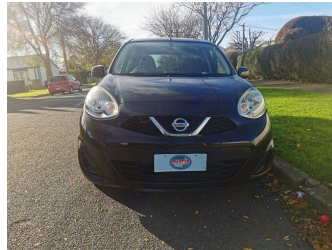
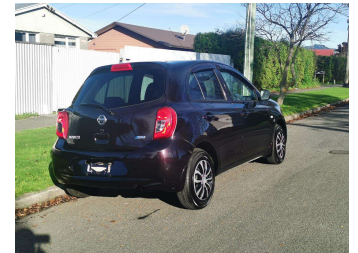
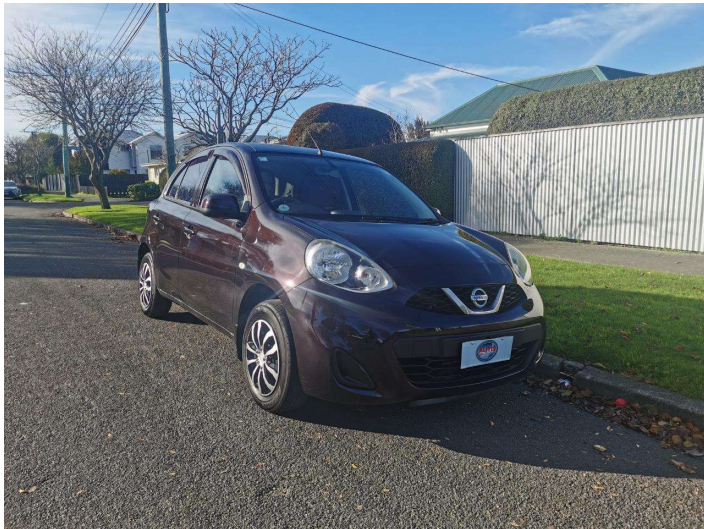


# 2016 Nissan March 12S



Purchase Price

**\$8,990**

Includes GST  
Excludes on-road costs of \$400

Finance may be available on this vehicle. Ask one of our friendly staff for more information.

Gain peace of mind with Mechanical Breakdown Insurance. **Ask us how.**

## Top features

- » AA Odometer Certified
- » Air Bag(s)
- » Air Conditioning
- » All Electrics
- » Auto headlights
- » AUX-IN
- » Bluetooth Handfree
- » CD Player
- » Central Locking
- » Chain-driven Engine
- » Climate Control
- » Digital Display
- » Electric Mirrors
- » Electric Windows
- » Fog Lights
- » Immobiliser
- » ISOFIX for childseat
- » Power Steering

Body Style

**5 door, Hatchback**

Odometer

**38,602 km**

Engine

**1200 cc, Internal Combustion**

Fuel Type

**Petrol**

Transmission

**Auto, 2WD**

Wheels

-

VIN

**7AT0DH0KX23383037**

Interior

**Black, Cloth**

Safety



Based on 2023 VSRR rating

Reg No.

-

Ext Colour

**Purple**

History

**Ex-Overseas**

Seats

**5 seats**

CO2 Emissions

★★★★☆

**123 grams/km**

Energy Economy

★★★★☆☆

**Annual fuel cost of \$2,040**

**5.2L per 100km**

Cost per year is an estimate based on petrol price of \$2.80 per litre and an average distance of 14000 km. Emissions and Energy Economy figures standardised to 3P WLTP.

**Stock ID: 5625**



Auto Depot | Phone 0800 001 198 | Email sales@autodepot.co.nz  
432 - 434 St Asaph Street, Phillipstown, Christchurch 8011, New Zealand  
www.autodepot.co.nz



★★★★★  
4.76 | 508 reviews