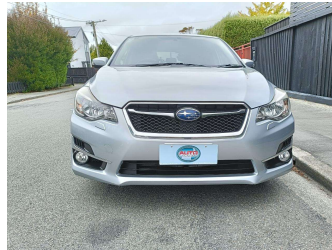


2016 Subaru Impreza 2.0i 4WD



Purchase Price

\$11,990

Includes GST
Excludes on-road costs of \$400

Finance may be available on this vehicle. Ask one of our friendly staff for more information.

Gain peace of mind with Mechanical Breakdown Insurance. **Ask us how.**

Top features

- » AA Odometer Certified
- » Air Bag(s)
- » Air Conditioning
- » All Wheel Drive
- » Alloy Wheels
- » Auto headlights
- » Auto rain wipers
- » Bluetooth Handfree
- » Chain-driven Engine
- » Cruise Control
- » Digital Display
- » Electric Mirrors
- » Electric Windows
- » Fog Lights
- » Immobiliser
- » Remote Locking
- » SI Drive System
- » Tinted Windows

Body Style

5 door, Hatchback

Odometer

113,664 km

Engine

2000 cc, Internal Combustion

Fuel Type

Petrol

Transmission

Auto, 4WD

Wheels

-

VIN

7AT0GF09X20125057

Interior

Black

Safety



Based on 2024 UCSR rating for 12-16 models

Reg No.

NFY625

Ext Colour

Silver

History

Ex-Overseas, 1 owner

Seats

5 seats

CO2 Emissions

★★★★☆

163 grams/km

Energy Economy

★★★☆☆

Annual fuel cost of \$2,740

7L per 100km

Cost per year is an estimate based on petrol price of \$2.80 per litre and an average distance of 14000 km. Emissions and Energy Economy figures standardised to 3P WLTP.

Stock ID: 6123



Auto Depot | Phone 0800 001 198 | Email sales@autodepot.co.nz
432 - 434 St Asaph Street, Phillipstown, Christchurch 8011, New Zealand
www.autodepot.co.nz



★★★★★
4.78 | 606 reviews